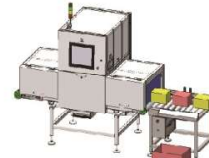


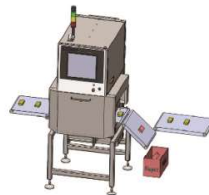
# X-ray Inspection Machine for Large Packaged Food

Ensure Quality and Safety

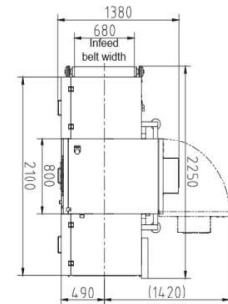
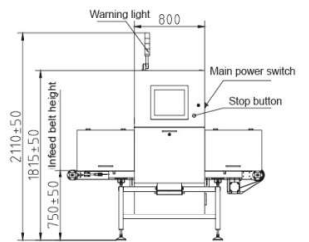
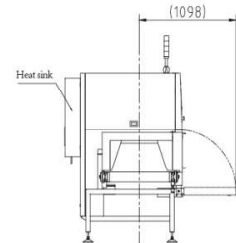
Dimensions (MY12060-XM)



Push board removal



Turning removal



Inspection size table

| width         | thickness     |
|---------------|---------------|
| 292mm(11.50") | 300mm(11.81") |
| 340mm(13.38") | 250mm(9.84")  |
| 388mm(15.28") | 200mm(7.87")  |
| 436mm(17.16") | 150mm(5.91")  |
| 484mm(19.06") | 100mm(3.94")  |
| 532mm(20.94") | 50mm(1.97")   |
| 580mm(22.83") | Conveyer belt |

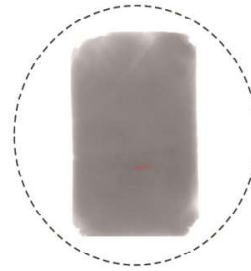
Widely used in dairy products, baked food, meat, additives, leisure food, etc.



Yeast powder



Yeast powder(original image)



Yeast powder(marked image)

|                       |  |
|-----------------------|--|
| Model                 | MY12060-XM   |
| Sensitivity (no-load) | SUS ball $\geq\Phi 0.3\text{mm}$ SUS wire $\geq\Phi 0.2\times 2\text{mm}$  |
| Material size         | Width $\leq 580\text{mm}$ , Height $\leq 300\text{mm}$   |
| Infeed belt width     | 680mm  |
| Dimensions            | 2250 $\times$ 1380 $\times$ 2110mm   |
| Net weight            | 700kg  |
| Load                  | 50kg   |
| X-Ray output          | 480W Max 120kV/8.0mA   |
| Infeed belt speed     | 10-40m/min adjustable  |
| Interface             | 17" LCD touch screen   |
| X-Ray leakage         | $<1\mu\text{ Sv/h}$  |
| Protection Level      | IP65 for drive parts, IP54 for others  |
| Power supply          | single phase AC220V $\pm 10\%$ , 50/60Hz, 2.5kW  |
| Service environment   | Ambient temperature 0-40 $^{\circ}\text{C}$ Relative humidity 30-85% $^{\circ}\text{C}$ No condensation, no freezing, upheaval |